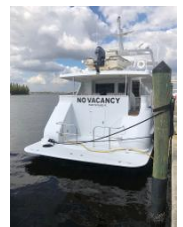




# Broward Raised Pilothouse



Make	Model	Length	Price	Year	Condition
Broward	Raised Pilothouse	100 ft	\$ 1,799,500	2000	Used
Boat Name	Hull Material	Draft	Number of Engines	Fuel Type	Location
NO VACANCY	Aluminum	6 ft	2	Diesel	Fort Myers, FL, United States

Four stateroom layout with VIP forward, full-width Master and two Guest Staterooms amidships. Private entry to Crew Quarters aft. Preferred 3412 Cat engines. Approximately \$1 million spent on upgrades and updates in 2016 and 2017. NO VACANCY is a "must see" for buyers in the 100' range.



## Additional Information and Photos

### Measurements

Cruising Speed: 17 kn  
Max Speed: 21 kn  
LOA: 100 ft  
Beam: 20 ft 6 in  
Max Draft: 6 ft  
Trim Tabs: Yes  
Displacement: 140000 lb  
Fuel Tanks Capacity: 7500 gal  
Fresh Water Tanks Capacity: 750 gal  
Holding Tank Capacity: 500 gal  
Number of Cabins: 6  
Number of Heads: 6

### Propulsion

#### *Engine #1*

Engine Make: Caterpillar  
Engine Model: 3412  
Primary Engines: Inboard  
Drive Type: Direct Drive  
Location: Port  
Engine Year: 2000  
Hours: 5000  
Power: 1350 hp

#### *Engine #2*

Engine Make: Caterpillar  
Engine Model: 3412  
Primary Engines: Inboard  
Drive Type: Direct Drive  
Location: Starboard  
Engine Year: 2000  
Hours: 5000  
Power: 1350 hp

### WALK-THRU



## Additional Information and Photos

**NO VACANCY** features a four stateroom layout with a VIP forward, full-width Master and two Guest staterooms amidships, each with en suite bath plus separate Crew's Quarters aft with private entrance.

**NO VACANCY's** full-beam Salon is entered from doors amidships or from the Aft Deck. Open layout great for entertaining. Forward of the Salon and starboard is the Day Head next to the starboard boarding doors. The companionway leads to the Galley with a large center island and the popular Broward "country kitchen" dinette with seating for up to 8. This Galley can easily handle extended trips with its commodious storage cabinets, drawers and lockers.

Forward of the Galley and down a few steps is the private VIP Stateroom with adjoining sitting area and en suite bath. Stairs to port of the wet bar in the Salon lead below to the landing from which the Master with en suite bath and two Guest Staterooms with en suite bath are accessed. The laundry and storage closet are here as well.

### **SALON**

- Full beam Salon
- Open layout
- Laminate hardwood floors
- Neutral color decor with nautical accents
- Twin sectional settees
- Dining table and chairs
- Wet bar with sink and granite countertop
- LED HDTV mounted above wet bar
- Under-counter bottle storage
- Additional cabinet storage under the salon windows

### **GALLEY**

- "Country kitchen" dinette
- Large center island
- Durable solid surface countertops
- Under-counter storage
- Under-island storage
- Ample drawers and lockers
- 4 Large storage lockers behind the dinette
- Side-by-side full-size refrigerator/freezer 2016
- Under-counter Sub-Zero (additional) freezer 2016



## Additional Information and Photos

Ceramic top range 2017  
Microwave with vent (over range) 2017  
Trash compactor  
Wine cooler 2017

### **VIP FORWARD STATEROOM**

Private VIP stateroom  
Centerline queen bed with storage under berth  
Dual reading lights  
Cedar-lined hanging locker  
Overhead hatch  
Adjoining dressing/sitting area  
Upholstered settee  
Dresser with 3 drawers

### **EN SUITE BATH:**

Vanity with sink and storage cabinet  
Medicine cabinet  
Shower and tub  
Headhunter royal flush marine toilet

### **MASTER STATEROOM**

Accessed via stairs from the forward Salon  
Full-beam king-sized bed with storage beneath berth  
Nightstands  
Reading lights  
Dressers, port and starboard  
His and Hers cedar-lined closets  
Entertainment center with TV in cabinet forward of the berth

### **EN SUITE MASTER BATH:**

His and Hers entries  
His and Hers Headhunter Royal Flush toilets  
His and Hers vanities  
Central walk-thru marble shower with glass doors and spa-like amenities

### **GUEST STATEROOMS**



## Additional Information and Photos

### **STARBOARD GUEST STATEROOM:**

Oversized twin berths  
Dresser  
Hanging locker

### **EN SUITE BATH:**

Large stall shower  
Headhunter Royal Flush marine toilet  
Vanity with sink and storage cabinet

### **PORT GUEST STATEROOM:**

Full-sized berth  
Large twin berth  
Dresser  
Hanging locker

### **EN SUITE BATH:**

Large stall shower  
Headhunter Royal Flush marine toilet  
Vanity with sink and storage cabinet

### **FOREDECK**

Access thru side doors amidships, port and starboard  
3500# Hydraulically-powered warping anchor windlass  
Dual 8' deck boxes with shore power connection and cushion tops for guest seating  
Bosun's locker

### **AFT DECK**

Access from port and starboard boarding gates  
Access from stairs on swim platform/transom  
Access from stairs from flybridge/boat deck  
Entry to Salon thru a sliding door  
2 Corian dining tables  
Wrap-around bench seating  
Wet bar with sink and commercial mini-fridge  
Scotsman fresh ice ice maker  
Door to secondary engine room entrance



## Additional Information and Photos

Faux teak decking surface 2017

### TRANSOM

Storage lockers, port and starboard  
Stainless steel hoop rails  
Oversized swim ladder  
Access to Crew's Quarters  
Access to Engine Room  
Glendinning retractable shore power cable

### YACHT TENDER

17' Key West skiff, 2003, with 90 hp Yamaha outboard engine  
Yamaha engine fully serviced with new battery in 2015  
Norcross Hawkeye Sounder  
Standard Horizon Eclipse VHF radio with Shakespeare antenna  
94-qt Igloo marine cooler with cushion  
MarQuipt 2000# davit for launching mounted on Flybridge/Boat Deck

### FLYBRIDGE AND HELM

Centerline helm  
NEW Garmin Glass Bridge navigation electronics  
NEW Glendinning fly-by-wire controls  
Analog and Digital Cat displays  
Icom ICM506 VHF  
ADT bow thruster controls  
Naiad stabilizer controls  
3-Person bench seat doubles as bar back  
Wet bar with sink, NEW U-Line ice maker/fridge, and storage  
Expansive flybridge, perfect for entertaining  
Port and starboard seating with sun lounges  
Spiral staircase aft to access Aft Deck  
17' Key West skiff with 90 hp Yamaha, aft Flybridge  
MarQuipt 2000# capacity davit, aft Flybridge  
All NEW flybridge cushions 2017  
Bimini top 2017

### RAISED PILOTHOUSE



## Additional Information and Photos

Steps up from the Salon  
Settee  
Captain's table  
Full compliment of controls  
NEW Garmin Glass Bridge navigation electronics (GPS, Chartplotter, Radar, Autopilot, Depth, Speed) 2016  
Analog and digital Cat readout gauges  
Icom ICM506 VHF  
Naiad stabilizer controls  
ADT bow thruster controls  
ACR searchlight controls  
Wiper controls  
AIS  
Large forward and side windows  
Ideal for piloting during inclement weather

### **CREW ACCOMMODATIONS**

#### **CREW COMPANIONWAY:**

Accessed from swim platform  
Leads to Engine Room  
Storage shelves  
Cabinets

#### **CAPTAIN'S CABIN:**

Portside  
full-size berth with 2 drawers beneath for storage  
Large hanging locker  
Desk  
3-Drawer dresser  
Refrigerator  
Microwave

#### **CREW CABIN:**

Single, twin-size berth with 4 drawers beneath for storage  
4-Drawer dresser  
Hanging locker





## Additional Information and Photos

### CREW HEAD:

Vanity with sink and storage  
Headhunter toilet  
Shower

### ENGINE ROOM and MECHANICAL DETAILS

Twin 1350 hp Caterpillar 3412 diesel engines, direct drive  
Approx 5000 hours on each engine, as of November 2017  
ZF transmissions, 2.5:1 reduction gears  
Glendinning engine controls  
Racor Fuel Filters for main engines and generators  
American Hydraulics bow thruster  
American Hydraulics anchor windlass  
Village Watermaker  
Air Compressor  
Fuel management manifold with transfer pump for 4 fuel tanks  
Fresh water system with filters and UV purification chamber  
Engine room exhaust fans  
Engine room induction towers  
Oil change manifold system for mains and generators  
Start/Stop panels with gauges for main engines and generators  
Sound Proofing  
Fire suppression system (serviced 2017)  
Fire alarm  
Fire-proof engine room door with safety glass port  
GFIC outlets  
Holding Tank with macerating pump-out  
Marine Air/Dometic Twin chilled water air-conditioning compressors  
Raw/chilled water circulating pumps  
Twin AC Main electrical distribution panels  
Twin 40kW Northern Lights generators, rebuilt December 2016  
overhaul, Starboard 317 hrs since overhaul as of 1/2018

Port 225 hrs since

### REFIT 2016

Refit 2016 of major engineering, mechanical, and structural improvements that included:





## Additional Information and Photos

New 8000 Series Garmin Electronics on both helms: GPS, AIS, rudder angle Indicator, auto pilot, engine data info, dual radars, dual sonars and cameras  
Total driveline alignment: new bearings, new seals, shafts aligned, props dyno-balanced  
Application of an epoxy-polymer anti-corrosive coating with warranty thru November 2025 to bilges and voids  
Installation of dripless shaft seals  
New appliances including Galley side-by-side, stove/oven, microwave, wine cooler plus washer/dryer  
Cooling water and sea chest: strainers overhauled and rebuilt  
Hydraulic heat exchanger reconditioned  
HVAC reconditioned  
Crew's Quarters interior refit with new flooring and new wall coverings  
Steering system redundancy  
Anchor windlass redundancy  
Naiad stabilizers serviced  
Interior lighting updated to LED  
Upgrade of throttle and shift controls to fly-by-wire Glendinning with wired remote  
Many additional items upgraded

### REFIT 2017 - Current

Both generators rebuilt; PTO added to the port generator  
Main engines serviced  
All new "Tommy Bahama" Salon furnishings  
New custom aft deck wet bar with sink, refrigerator, and ice maker  
New faux teak aft deck flooring  
New flybridge cushions  
New Bimini top  
New tankless hot water heater  
Watermaker serviced  
December 2017 - boat was hauled, bottom paint applied, and new zincs added  
January 2018 - all oils were changed in main engines and generators; all filters changed

### EXCLUSIONS

Owner's personal items

### BROKER'S REMARKS



## Additional Information and Photos

**NO VACANCY** recently underwent an extensive refit with her owners making upgrades to structural, electrical, electronic and mechanical systems surpassing this Broward's original build specifications. The yacht has never been chartered; enjoyed only by the owners, family and guests.

For the 100' yacht buyer, **NO VACANCY** represents an excellent choice with her four stateroom layout, solid and sturdy build, economical and reliable Caterpillar engines and many recent upgrades. Truly a "must see".

### Disclaimer

The Company offers the details of this vessel in good faith but cannot guarantee or warrant the accuracy of this information nor warrant the condition of the vessel. A buyer should instruct his agents, or his surveyors, to investigate such details as the buyer desires validated. Hours listed may vary from actual hours due to recent use. Purchaser is encouraged to verify hours prior to purchase. This vessel is offered subject to prior sale, price change, or withdrawal without notice.



## Additional Information and Photos



Port Aft Profile



Transom/Swim Platform



Port Bow Profile



Aft Deck & Wet Bar



Bow



Aft Deck Wet Bar





## Additional Information and Photos



Aft Deck Wet Bar



Salon/Dining looking forward



Aft Deck Staircase to Flybridge



Salon Cabinetry Portside



Aft Deck Seating and Dining



Dining and Salon looking forward



### Additional Information and Photos



Salon looking aft



Day Head



Salon Seating



Lower Helm - Pilothouse



Dining & Salon looking Aft



Lower Helm - Pilothouse





### Additional Information and Photos



Pilothouse Guest Seating



Flybridge - aft sun lounge and Tender



Pilothouse Stairs to Flybridge



Flybridge - aft seating and sun lounge port



Flybridge - looking aft from Helm



Flybridge - looking forward



### Additional Information and Photos



Flybridge - looking forward - under arch



Flybridge - Radar arch



Flybridge - Fridge



Galley



Galley



Galley





**Additional Information and Photos**



Galley



VIP Stateroom



"Country Kitchen" Dlnette



VIP Head



Forward VIP Suite - Private Access



VIP Shower



### Additional Information and Photos



Aft Staircase to Accommodations



Master Stateroom



Master Stateroom



Master "His" Head



Master Stateroom



Master "Hers" Head





### Additional Information and Photos



His & Hers Master Shower



Master Shower



Master Shower



Starboard Twin Guest Stateroom



Starboard Twin Guest Stateroom



Port Twin Guest Stateroom



## Additional Information and Photos



Guest Head



Crew Companionway



Guest Shower



Crew Quarters



Laundry



Captain's Cabin





### Additional Information and Photos



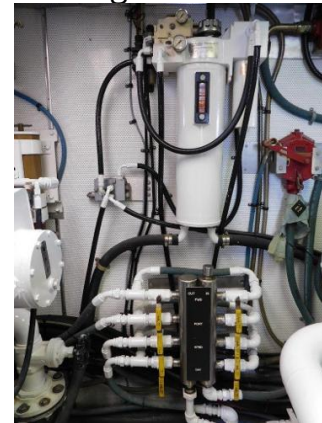
Crew Head



Engine Room



Engine Room



Engine Room



Engine Room



Engine Room



## Additional Information and Photos



Engine Room



Engine Room

Engine Room

