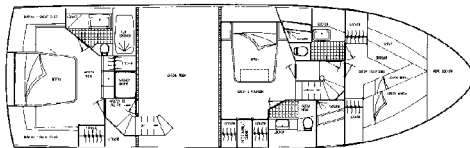
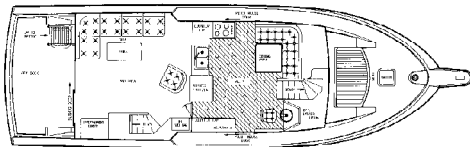


Viking 50 Motor Yacht

1990-92



With her short foredeck and small cockpit, the Viking 50 Motor Yacht is all about interior volume. Hull construction was very high-tech for the 1990s, a blend of high-tech fabrics, prepreg composites, and vacuum bagging. Belowdecks, the expansive floorplan includes three double staterooms on the lower level, each with a private head and separate stall shower, in addition to a full width engine room—a big layout for a 50-foot boat. The master stateroom is aft with centerline king berth and en-suite head with tub/shower. The galley is up and to starboard, an L-shaped dinette is opposite, and the lower helm is to starboard. Aft, the Viking 50's large salon features a built-in bar and entertainment center. A staircase in the salon leads down to the master stateroom and walk-in engine room. The small cockpit includes a seating area, and the flybridge holds the dinghy and davit as well as lounge seating for guests. Additional features include teak cabinets, central vacuum system, dishwasher, washer/dryer (galley area), and port/starboard deck access doors. GM 735hp 8V92 diesels cruise the Viking 50 Motor Yacht at 18–20 knots.

Specifications

Length.....	50'6"	Fuel, Std.....	600 gals.
Beam.....	16'4"	Fuel, Opt.....	770 gals.
Draft.....	4'3"	Water.....	250 gals.
Weight.....	54,000#	Hull Type.....	Modified-V
Clearance.....	20'0"	Deadrise Aft.....	14°