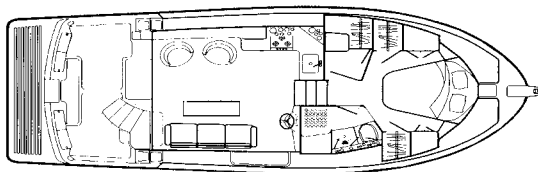


Mainship 350-390 Trawler

1996-2005



The Mainship 350 Trawler (called the Mainship 390 in 1999–2005) is a stylish, moderately priced coastal cruiser with classic trawler lines and a good turn of speed. Unlike a true trawler with a full-displacement hull, the 350/390 is built on a faster modified-V hull with flat aftersections and a shallow, full-length keel. She's a very roomy boat inside thanks to her wide 14'2" beam, and the floorplan manages to include double berths in both staterooms as well as a separate stall shower in the head. (Note that the guest stateroom is partially tucked beneath the galley.) Visibility from the lower helm is excellent, and a deck door provides easy access to the foredeck. Aft, a sliding glass door opens to the covered cockpit where a series of molded steps (instead of a ladder) ascends to the extended flybridge. Additional features include deep, well-protected side decks, an integral swim platform, transom door, a full teak interior, and radar mast. Among several engine choices, a single 300hp Cat diesel will cruise the Mainship 350/390 at 10–12 knots (about 14 knots top), and twin 230hp Yanmars cruise at 14 knots (18–19 top).

Specifications

Length Overall.....	39'9"	Clearance	18'8"
Hull Length	34'9"	Fuel	300 gals.
Beam.....	14'2"	Water	130 gals.
Draft.....	3'8"	Waste.....	30 gals.
Weight.....	22,000#	Hull Type.....	Modified-V